

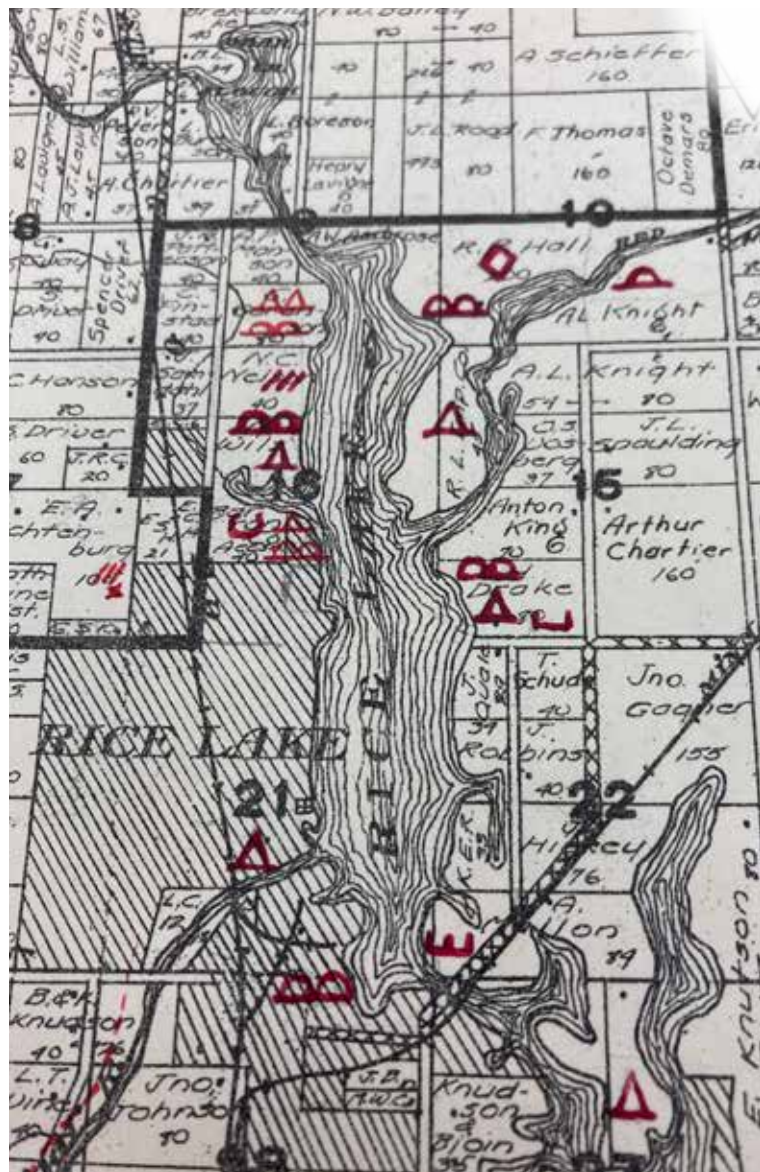
Hay River

Since 1987

Community News

REVIEW

April 2026



Past Native Presence in the Hay River Valley

By David K. Williams

The winter 2025 issue of the Wisconsin Magazine of History featured a lengthy article by Stephen Kantrowitz entitled “Unvanishing: Indigenous Wisconsin and the Legacy of Charles Brown.” It focused on Brown’s lifelong efforts to document Native American geographical sites, especially burial and effigy mounds throughout the state.

Brown’s efforts culminated in a 1929 atlas in which he noted on plat maps for every county in Wisconsin where mounds,

(Left) An outline of mound locations in our general region. Photo by David K. Williams

Native villages, campsites, rock shelters, petroglyphs, and a host of other sites had been placed by Native people. His efforts were designed to chronicle those sites before the onslaught of settlers’ cultivation, and often, the obliteration of the sites. Brown successfully lobbied the State Legislature to pass a 1911 law extending protections to those sites, though enforcement was often lackadaisical.

Native peoples have, of course, been resident in Wisconsin for thousands of years. Historians attribute the mound-building culture to the Late Woodland Period, from roughly 400 A.D. until the coming of European

explorers in the 1600s. John Russell and Larry Lynch, in their 1996 history of Dunn County, “Where The Wild Rice Grows,” note that mounds found in Dunn County have been dated to around 1200 A.D.

As I read the article in the Wisconsin Magazine of History, my curiosity was stirred to see what Charles Brown had listed on his maps for Barron and Dunn County. I recently spent a day in the Archives at the Wisconsin Historical Society in Madison, reviewing Brown’s maps, and even more interesting, the county-by-county field notes he

“Native” cont’d. on page 6...

Local River Connection Inspires Children’s Book

By James Close

The Hay River has inspired a new children’s book by local author and illustrator James A. Close. Close grew up along the Red Cedar River, spending countless days swimming, fishing, kayaking, and skipping stones along its banks. Those early experiences shaped a lifelong connection to water and the outdoors, one he continues today while living along the Hay River and exploring the surrounding woods with his children and grandchildren.

That connection became the foundation for “Once Upon a Riverside”, a children’s

book that Close originally created as a holiday gift for his grandchildren. The story is a colorful, nature-centered adventure that follows a kind young protagonist and her animal friends as they journey downstream. Along the way, the book celebrates friendship, teamwork, and gentle lessons about the natural world.

Many of the book’s scenes and animal characters are inspired by real moments spent outdoors with family. The Hay River itself is named in the story and plays a central role in the adventure. The river runs roughly 50 miles through Barron and

Dunn counties, beginning in the City of Cumberland at Beaver Dam Lake, flowing past Prairie Farm and Wheeler, and eventually emptying into Tainter Lake, where it joins the Red Cedar River.

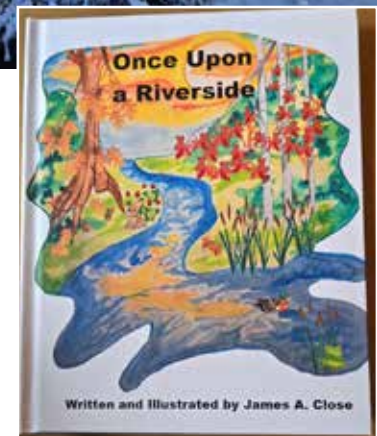
Close is a graduate of Menomonie High School and the University of Wisconsin-Stout, where he studied mathematics and computer science. After a career as an IT professional, he turned his problem-solving skills toward a more creative pursuit, writing and illustrating

“Book” cont’d. on page 2...



The beautiful Hay River is a natural source of inspiration to many. Close completed a children’s book inspired by the Hay River, originally created as a gift to his grandchildren.

Photos by James Close



INSIDE



Reading pg. 4



Easter Egg Hunt pg. 5



Barn Quilts pg. 6



Tamale Pie pg. 10



Mary Poppins pg. 10



The Book Report Dallas Public Library

By Barbara Petersen

Plant Sale

Plans are in progress for May's Memorial Day Plant Sale. In the next issue of the Hay River Review, we will give specific directions for taking part in our sale.

It is early, but many gardeners start planning what will happen in their flowerbeds around this time. Gardeners start thinking about overflowing flowerbeds or plants they no longer want that could go on our plant sale.

We are discussing also having an area for house plants; however, since they are more delicate, they may only be available during library hours, since they would be housed inside the building.

Children's Activities

We are trying something new this month when it comes to craft activities. We are planning activities that could carry over for the entire month instead of only lasting for a week. We hope this will encourage attendance throughout the month.

...“Book” cont'd. from front page

children's books. A husband, father, and grandfather, Close enjoys hiking, mountain biking, kayaking, and exploring local trails.

Illustrated in colorful watercolor, “Once Upon a Riverside” weaves in simple, engaging details about animals and their seasonal habits, including how they survive winter. The book is suggested for children ages 4 to 9 and is designed to be enjoyed by families, classrooms, and shared reading.

Rooted in the local landscape and connected by waterways familiar to the region, “Once Upon a Riverside” offers a cozy, educational story for young readers who love animals, nature, and stories inspired by real places close to home. The book is available in hardcover, paperback, and eBook formats on Amazon.com. More information about the author and the book can be found at jamesaclose.my.canva.site.

All of the month's activities will be available, and visitors can choose what crafts they want to do. They may participate in any of the options. When they visit again (within that month), they may repeat the theme or pick a different one.

Each craft “theme” will include library resources, reading suggestions, general information, crafts, paper puzzles, coloring pages, bookmarks, etc.

April's themes are: Easter, Paper Piercing or Embroidery on Paper, Recycling, and “Ready-Set-Grow.”

Children can get off the bus and work on a craft before heading home. Those parents who homeschool are also welcome to bring their children.

Survey

We plan to have a short survey available at the Spring Primary about the services we provide and could provide in the future. Please look for this survey, fill it out, and deposit our Library Survey in the marked container at the Spring Primary on April 7.

New to Us

Because we are closed on the Saturday of Easter weekend, we are providing a special Easter basket to be given to a lucky child at the Village's Easter Egg Hunt. We encourage parents to bring their children to the Easter Egg Hunt and maybe win a basket.

“

Timberdoodle
MEDIA

MAKING LOCAL MARKETING MAKE SENSE!

715-544-8001 INFO@TIMBERDOODLE-MEDIA.COM

”

WIRTH EXCAVATING, LLC

- Excavating • Trucking
- Lime Spreading

Jason (715) 829-1295
Barry (715) 296-6492

Looking for In-home Help?

Check the Resource Guide at **adrcconnections.org** or call 715-537-6225 for help connecting to local resources

ADRC
Aging and Disability Resource Center
of Barron and Rusk Counties

Hours Change

We are once again changing hours. With the March snows dissipating, we are thinking ahead to spring and summer. Therefore, we are moving to our summer hours of 2 to 6 p.m. on Tuesdays and Thursdays. Our Saturday hours will remain the same—9 to noon.

Closed April 4

We will be closed on the Saturday of Easter weekend, April 4, so our librarians may have time with their families.

National Library Week April 19-25

When you visit the Dallas Library this week, thank your librarians for all they do. Not only do they put books into the catalog, organize them alphabetically on the shelves, cover the ones that need protecting, but they must also do the dusting and general cleaning. Quite often, these busy ladies don't receive the credit they deserve.

History of Barn Quilt Event

We received information that the Ridgeland Library is presenting History of Barn Quilts on April 18 at the Elementary School from 10:30-11:30 a.m. Watch for posters or call the Ridgeland Library for more information--715-949-7323.

Stay Connected

Library hours

Tuesday and Thursday- 2 to 6 p.m.

Saturday- 9 a.m. to noon.

Like us on Facebook! Dallas Library - WI.

Email: dplibrary2018@gmail.com.

Mailing address: Dallas Public Library, P.O. Box 84, Dallas, WI 54733.

Physical address: 100 Dallas Street W., Dallas, WI.

Phone: 715-837-1186 (Shared with village- feel free to leave a message)

Anderson Sanitation

Portables
Septic & Holding Tanks

Drew Anderson (715) 455-1404

A & M SUGARWORKS

Your hometown maple syrup supply store
Bottles, taps, evaporators, bags, tools, and more!

ampuremaplesyrup.com

Want something new and fresh?

Kitchen • Bath
Flooring • Paint • Tile

licensed & insured residential contractor with services through Western Wisconsin

precisioninteriors.net

PRECISION INTERIORS
715-410-9227

Free Estimates

Diamond Street Beauty Bar
139 Diamond St. Ridgeland

Salon Hours
Tuesday 9-4
Wednesday 11-6
Thursday 12-7
Friday 9-2
Saturday By Appt. 715-949-2887 (CUTS)

Gift Certificates Available

Editor

Danny McLennan
(715) 544-8001
editor.hayriverreview@gmail.com

Layout Design

Jessica Fischer
(612) 810-6855
cloverleafhome@mac.com

Advertising

Danny McLennan
(715) 544-8001
Ads.HayRiverReview@gmail.com

Bookkeeper/Subscriptions

Renee Bartz
(715) 308-1014
Office.HayRiverReview@gmail.com

Publishing Cooperative Board

Betty Glaser - Secretary
bls5524@yahoo.com
David Williams - Treasurer
williamsda@uwstout.edu
Donnette Mickelson - Director
donnettemickelson46@gmail.com
Douglas Owens-Pike - President
dowenspike@gmail.com

Maranda Peltier
Maranda.Lombardo@gmail.com

Shawn Kelley - Director
sckelley72@gmail.com

Regular Contributors

Ann Lee
Barbara Peterson
Betty Glaser
Brienne McLennan
Darlene Ramos
David Williams
DM MICK
Donnette Mickelson
Douglas Owens-Pike
Lon Christopherson
Martha Wright
Sam Dodge

Letters to the Editor & Misc.

editor.hayriverreview@gmail.com

Newspaper Policy

The Hay River Review is published monthly by the Hay River Publishing Cooperative. The Review reports community news and promotes the exchange of ideas in order to enhance the quality of life and to encourage community participation.

The Review is always looking for stories of community interest. If you have a story idea, tip, or article, please email Danny McLennan at editor.hayriverreview@gmail.com. Letters, articles, and photos can also be submitted online at HayRiver-Review.com, or by mail to: HRR, N12638 County Rd Q Downing, WI 54734. Articles may be edited and are published at the discretion of the REVIEW.

The Review welcomes readers' viewpoints. Letters must be signed and include a telephone number for verification purposes. Unsigned letters will not be printed. The REVIEW reserves the right to edit letters or delete parts of letters with defamatory or unsuitable content. Letters are published at the discretion of the Review.

Opinions expressed by the editor, correspondents, columnists, and contributors do not necessarily reflect those of the Hay River Publishing Co-op.

The staff and members of the board thank the advertisers who support the publication of the Review and encourage everyone to patronize local businesses whenever possible.

The Review is printed by Publisher's Printing of Amery. The paper is mailed free to all Prairie Farm, Ridgeland and Dallas addresses as well as residents of the Prairie Farm School District.

4-H is Bridging Generation Gaps

Generation Celebration Program

By Zachary Rozmiarek

Dunn County 4-H strives to provide its youth with ways to bridge communication gaps, especially With older generations, so when Kathy Asper of Menomonie, Wisconsin approached the Dunn County 4-H Educator, Zachary Rozmiarek with a multigenerational program idea that would give 4-H youth the chance to interview some of the residents of the Neighbors of Dunn County Nursing Home to learn their stories, he was intrigued. "When an interesting idea for a program comes along that not only fosters connections and communication but also provides opportunities to develop mutual respect between different age groups, we are all in," said Rozmiarek.

According to Asper, she learned about such a cross-generational project at a storytelling conference at which a 4th-grade teacher was a guest speaker. "It was touching to hear how many of the friendships that developed between her

students and their storytelling partners that continued many years after the project ended," said Asper, "The thought of developing a similar project has fascinated me ever since, so I'm looking forward to sharing it in Dunn County with our amazing 4H staff." The Generation Celebration program is a five-session hybrid series. Three sessions will be in person, and two will be virtual.

Prior to interviewing the residents, there will be two workshop sessions for youth led by Asper, a recently retired public health educator, where the youths will learn interviewing techniques and come up with the questions that they think are interesting to ask the residents about. This will increase the likelihood of a stronger intergenerational connection. By having the residents talk with their youth friend, it will give them a chance to become a mentor to them by talking about themselves and memories that they think are important.

Once the youths have conducted the interview, there will be a virtual workshop where they will share what they learned during the interviews, and hear about good public speaking skills so they can best tell the residents' stories. They will then share them during a Generation Celebration Day at Neighbors on April 28, where the youths, the residents, and their families will gather.

According to Alyssa Stelter, Neighbors Life Enhancement Mentor/Volunteer Coordinator, intergenerational programming is a great way to bring together older and younger generations that may not happen in day-to-day life. Stelter said, "There are so many things that both the kids and the older adults can learn from each other. The Generation Celebration will provide a way for that learning to happen in a fun way. There is always so much joy when kids visit our residents." She is hoping

that this project will open a door for the kids to meet a new friend and potentially for them to continue to visit and volunteer after the program is over. She continued, "This project is a great opportunity to have the kids and residents make meaningful connections while also building life skills like interviewing, writing, and communicating with those of different ages and backgrounds."

The 4-H Generation Celebration Program also received a \$250 grant from Thrivent to help fund the multigenerational project. Dunn County 4-H has decided to open this program up to the public, so any youth in grades 3 through 12 may also join in. To register for the Generation Celebration Program, go to <https://go.wisc.edu/generationcelebration>. Registration for the program closes on April 6. The first workshop session will be on April 11 at the Dunn County Government Building.

ONLINE BUSINESS DIRECTORY

Visit hayriver-review.com/directory
\$20/yr to be listed

PUBLISHING DATES

Issue	Ad Due	Copy Due	Distribution
May	April 24th	April 23rd	May 1st
June	May 22nd	May 21st	May 29th
July	June 19th	June 18th	June 26th

Hay River Review is printed by Publishers Printing Services, 215 Power St, Amery, WI

ADVERTISEMENTS & SUBSCRIPTIONS

For \$9.00 a column inch you can get your business the notice it needs! A two column by 2" B/W ad costs \$36. Special rates are available for 3, 6, and 12 month contracts. We also offer color advertising options, and ad design services. Email Ads.HayRiverReview@gmail.com with advertising inquiries and/or visit hayriver-review.com/ advertise. The Hay River Review reserves the right to refuse any ad.

This community paper has been in operation since 1987, largely due to the support of advertisers and subscribers!

Thank you!

Support us with a subscription, or deliver local news and history to family and friends outside of the Prairie Farm- Ridgeland area for just \$25/yr (WI) and \$30/yr (out-of-state). Email your name and address to Office.HayRiverReview@gmail.com. Please include "HRR Subscribe" in the subject line. OR **SUBSCRIBE ONLINE** at HayRiver-Review.com

POSKIN FEED STORE

Your one-stop shop for feed and feeding equipment for domestic pets, farm animals, wild birds, and deer. We also carry seeds for pastures, food plots, lawns, and sweet corn. Our non-feed inventory includes medication, gates, corral panels, and more.

If we don't have it in stock, we'll do our best to get it for you.

Minimums: Bulk Delivery- 1 Ton • Bagged Orders- 500 lbs.

• Your own barrel, totes, or wagon- 500 lbs.

(715) 357-3350 poskinfeedstore.com

Mon-Fri 8am-5pm Sat 9am-noon



Hay River
REVIEW

ANNUAL MEETING

**Saturday
April 11th, 10AM**

Open to all shareholders and our community at Ridgeland Library, and via Zoom

Voting is open to those who own stock and have an active subscription to HRR.

If you have questions about the meeting (or how to access it), please email bls5524@yahoo.com



Ridgeland Dallas Elementary

By Nikki Beebout

Students at Ridgeland-Dallas Elementary had a fun and busy week celebrating Read Across America, centered around Dr. Seuss's birthday and building a love for reading.

We kicked off the week with Donuts and Juice with Dr. Seuss, where families were invited in before school to enjoy donuts, juice, and time to read together. A variety of Dr. Seuss books were set out in the library for families to read and enjoy.

Throughout the week, we had different themed days and activities to keep the excitement going. Wacky Wednesday was full of silly and mismatched outfits, and Dress as Your Favorite Dr. Seuss Character Day brought so many creative costumes into the building. Read My Shirt Day added to the fun, as students wore shirts with words and phrases for everyone to read throughout the day.

Students also had the chance to get creative with some Seuss-inspired activities. The 1st and 2nd grade class drew their own Sneetches, each one unique and full of personality.

We wrapped up the week with Green Eggs and Ham Day. The kindergarten class even made and tried green scrambled eggs with ham, which was a big hit and a fun way to bring the story to life.

It was a great week filled with fun, creativity, and lots of reading. We love finding ways to make reading exciting and meaningful for our students.

Celebrating Reading



Photos submitted by Nikki Beebout



Made by hand, every time

TIMBER FORGED
DESIGNS

Traditionally crafted dining room tables and chairs

Follow us on facebook! Timber Forged Designs

SPORTSMEN'S BAR AND GRILL LLC

Friday Night Fish Fry
Featuring Walleye
choice of potato, side and dinner roll.
Shrimp Baskets also available.
RIDGELAND, WI
715-949-1666 • 715-418-9330

Prairie Farm - Ridgeland

Emergency FOOD PANTRY

Located downstairs in the Prairie Farm Legion Hall

Open Tuesdays
2:00 p.m. - 4:00 p.m.
Closed the 5th Tuesday

For more information call
715-641-1254 or 715-455-8061

Donations accepted at 149 10th Street Ridgeland, WI 54763
This institution is an equal opportunity provider

L.O.F. Apparel & Tack
Gary & Leesa Berhow
101 Center St. Ridgeland, WI

Open Thur & Fri
11am-5pm, Sat 9am-3pm

Stop in and see all we have to offer!

- ★ Horse Grooming Products & Tack
- ★ Clothing for All Ages
- ★ Boots & Shoes
- ★ Cowboy Hats
- ★ Purses and Jewelry
- ★ Breyer Toy Products
- ★ Special Orders

loftack.com 715-949-1000

Easter Egg Hunt!
with a surprise visit with the Easter Bunny!

The Ridgeland Civic Club Easter Egg Hunt is **Sat. April 4th, 10 a.m.** in the Ridgeland Village Park Weather permitting

A hoppin' good time for the whole family!

Alternative location Ridgeland Community Center parking lot
Bring your Easter Basket and your Camera

Eggs, Snow, and Mild Existential Panic

The Ridgeland Easter Showdown

By Betty Glaser

Once again, the brave and ever-optimistic members of the Ridgeland Civic Club find themselves locked in a timeless spring tradition: not the Easter Egg Hunt itself—but the dramatic prelude... Will the weather cooperate?

This year's saga took an unexpected twist when Mother Nature, clearly feeling mischievous, dumped a generous helping of snow onto Village Park just as plans were coming together. Because why not? Nothing says "spring celebration" quite like a landscape that looks suspiciously like January.

Now the question looms large: Will the hunt unfold across the grass of Village Park, or will it migrate indoors to the Community Center? The decision—equal parts meteorology and hopeful guesswork—will be made in the nail-biting hours between Friday night and early Saturday morning. It's less of a schedule and more of a suspense thriller.

And if it's not snow, it's the cold. If it's not the cold, it's a sudden heat wave. And if it's the heat, then comes the mud—nature's way of saying, "Let's keep things interesting." Truly, the elements are pulling out all the stops this year. But fear not—because

come frost, slush, or sunshine, the show will go on.

Approximately 1,300 eggs—yes, thirteen hundred tiny capsules of joy—have been carefully prepared and filled with goodies, ready to be discovered by eager little explorers. Each year, the scene is nothing short of magical: children plotting their egg-hunting strategies like seasoned treasure seekers, darting across the grass or floor, comparing finds, laughing, and occasionally sprinting full speed toward what they are certain is the jackpot egg.

We will have three age groups separated with their own designated areas. At that point, it's less a "hunt" and more a joyful, candy-fueled stampede of determination.

Adding to the festivities, the community's beloved



Another great event to get together and enjoy the season! Photo submitted by Betty Glaser

Easter Bunny will be on hand for photos—ready to pose with children whether they arrive in pastel spring outfits... or bundled in winter coats, boots, and possibly mittens. Fashion, after all, must sometimes bow to practicality in Ridgeland's unpredictable spring.

So prepare accordingly. Dress for all four seasons if necessary. Bring baskets, bring smiles, and maybe even a small meteorological prayer.

Join us Saturday, April 4th at 10 a.m.—location to be revealed in the final dramatic act: Village Park... or the Ridgeland Community Center.



LESS IS PLENTY

By Darlene Ramos

In the book "From Here to the Great Unknown," Riley Keough describes her mother (Lisa Marie Presley) looking closely at the books her father (Elvis Presley) kept in his room.

Riley was a child and never knew her grandfather at all. She and her brother were spending "cuddle time" together with their mother, but the books she read to them were not child bedtime stories. They were the "earmarked" pages of the beloved father and grandfather's most-read books.

Darlene Ramos is a retired cafe-owner and decades-long resident of the Hay River township. Born and raised in California she eventually migrated to Wisconsin for life in a "little (farm) house in a big woods", with her family, wherefrom many articles and columns were written for local publications.

The Folded Corners

Lisa Marie picked up the Bible. She looked for and lingered at the places where her father marked a passage with a written comment or expression. Each word he wrote revealed that what he highlighted was relevant to his life; the action bespoke an inspiration that he felt was meant for him directly.

She marveled that his hands marked those words, and she dwelled deeply on them in the presence of her children. She wondered aloud about them. Decades later, when Riley brought the memoir to fruition, she too pondered the meaningfulness the words held for her famous grandfather.

The rest of us are just "regular people," but we all hope to leave behind something more than material for our loved ones to recall us by. If we have

a spark of wisdom to share, we want to pass it on.

I say if you want to know what people are about, look at the folded corners of their books, and dwell on them deeply!

We won't underline every word, but there is something there that speaks to our souls, that was worth repeating to ourselves and was always worth the invitation to others for their contemplation.

I have so many, but the lesson from a page of "The Good Earth" by Pearl S. Buck stands out to me.

In it we have Wang Lung (a poor farmer turned wealthy land baron) demanding from his homely, loyal wife (O-lan) her two treasured pearls. Pearls she carried close to her breast for a very long time, the only "riches" she ever knew, a symbol of beauty she cherished inexplicably.

Her husband, who once treasured HER, desired to give them now to his young, vainly beautiful concubine. Ever servile, O-lan relinquished them, weeping quietly at the betrayal. Even so, she continued her work--labor she never ceased to do in their striving times and even



All my books have folded corners. Photo by Darlene Ramos

in their wealthier times, together.

Of course, I don't like the broken spirit of O-lan! But I like the impact of how obvious it is that cruelty like that should not happen. It is evocative, it is stirring to the soul of a reader. If a child or grandchild of mine reads that page (because I earmarked it) they will know, and they will recall about me: "She was all about loyalty in our closest relationships. She knew people respond best to kindness, and she knew that betrayal and cruelty destroy."

Wang Lung lived to experience great sorrow over his cruelty, but there was no turning back, no doing over.

For me, living life as if there are no do-overs ends up being the message of O-lan and her pearls. Yet again, there is a profound message behind even that one. Earlier in the story, we witness her procurement of the pearls, and they were not a gift from her beloved. She took them

by looting amidst the turmoil of war; she, in essence, stole them.

We don't know her unseen victim; perhaps we viewed O-lan's act as harmless to anyone directly and as deserving of herself. Surely someone else would have come along anyway to stake the pearls as their own. Perhaps if it had been ourselves, we would have moved on without them, not wanting the "blood" of robbery on our hands.

But the other lesson of the pearls is that no one goes unpunished in this life, or from this life. The misdeeds we commit always affect a ripple.

We can't foresee, but we can imagine various impactful outcomes from the wave effect of our actions.

If we want to know what our loved ones were about in their lifetimes, the folded corners of our books will reveal the greatest lessons we wish we could pass on.

SeaClay Roofing & Spray Foam Insulation

Gary Risler Prairie Farm WI

Spray Foam Batt & Blowing Insulation Interior & Exterior Flat Roofing Metal Restoration

Will Meet or Beat any Spray Foam Quote. Just need to show proof of quote.

715-418-3887 garryrisler@gmail.com



All Aboard with the Ridgeland Library Review

By Donnette Mickelson

Our barn quilt painting classes are in full swing, and there are three more scheduled classes to register for. Be sure to sign up now, as classes for the remaining sessions are filling up quickly. The remaining dates are: April 25, May 9, and June 13.

Mark your calendar and plan to attend a special presentation at the Ridgeland-Dallas elementary school by speaker Jim Leuenberger, who will present information on barn quilts and how Shawano

county Wisconsin, has become the barn quilt capital of the United States. There will also be a display of some of the barn quilts that have been painted so far in Ridgeland. You will be amazed at the talent and creativity of our neighbors and their painted barn quilts. In addition there will also be an art show of ACEO, Artist trading cards, created by local residents. These small cards are only 2 1/2" by 3 1/2" but pack a fun, colorful art display.

Information on participating in the ACEO art show can be picked up at the library and is open to all ages. Deadline

for art is Thursday, April 16th. The theme is Heritage of the Barn: Agricultural History in Wisconsin. Think barns, tractors, crops, farm animals, and of course, quilts. There is no need to feel intimidated by creating art because this is only the size of a baseball card. Paper and art materials are available at the library for anyone who would like to participate. Prizes will be awarded.

The art show will open at 9:00 am, and the speaker will be presenting from 10:30-11:30. Artwork will remain on display until 12:00. We hope you join us! Bring a friend and support your library and your community for a fun, engaging, and informative morning.



Carrie Ress completed a beautiful barn quilt recently in our class.

...“Native” cont’d. from front



(Left) An outline of mound locations in our general region. Photo by David K. Williams

accumulated over many years of research.

Brown’s legacy is mixed—he certainly did yeoman’s service by creating a definitive (well, not quite definitive—more on that later) list of Native sites in the late 1800s and early 1900s in Wisconsin. But in addition to that, chronicler and effort to preserve mounds and sites, he at times himself excavated mounds or encouraged others to do so. To Native people, mounds were sacred burial sites, and these archaeological digs were a desecration.

Most of the sites identified by Brown in Barron and Dunn Counties were in the eastern part of the counties and along the Red Cedar River. Rice Lake has an especially large number of mounds noted, as does Chetek.

“Native” cont’d. on page 7...



Darla Peters displays her barn quilt, finished with vivid colors and a unique design. Photos submitted by Donnette Mickelson

Please support our advertisers. They are the lifeblood of this small community-run newspaper.

Silver Creek Lutheran Church
Pancake Breakfast and Bake Sale
Saturday, April 25th
7:00 - 11:00 a.m.
483 7th Ave. Clayton, WI
 (8 miles east of Clayton on Cty Hwy D or 8 miles south of Almena on Cty Hwy D)
Menu: All you can eat pancakes, eggbake, sausage, fresh fruit, applesauce, cheese, milk, coffee & juice
Free Will Offering

Edmond Mfg.

- Welding, repairs and fab
- Refab attachments to fit other machines
- Rebuild TMR Mixers, Manure spreaders
- CNC plasma cutting table
- Aluminum welding

Edmond Mfg is installing erosion control blankets with the Net Setter 800 machine at your farm or business to stop washout gullies. Call George for an estimate.
Call George 715-790-1964
 — Located in Hillsdale —

LM TRAILER RENTALS
715-205-5229

- Trailers
- Dumpsters
- Skid steers

Your local source for affordable trailer rentals
lmtrllc.com

bryant
 Heating & Cooling Systems

WHATEVER your situation, WE HAVE A SOLUTION.

Whether it's maintaining your current system or installing a new one, our specially trained technicians will make sure the job is done right. Call 715.246.2660 to schedule an appointment today.

WHATEVER IT TAKES:
 321 Wisconsin Drive • New Richmond, WI
715-246-2660
 www.countrysideph.com

Countryside
 PLUMBING & HEATING, INC.



HOMESTEAD HACKS

By Sam Dodge

My friends, Groundhog Day has come and gone. The famed Punxatawny Phil out in Pennsylvania has determined that we've got some more winter in front of us, though groundhogs in other locales have come to different conclusions. Here in the Prairie Farm area, we're experiencing one of the milder Februaries in my 30-year residence. Now we'll see what March brings! Things seem to have become a bit less predictable in my lifetime.

Some things are still easy enough to prognosticate on, though. As per usual, we have a pile of beautiful seed and nursery catalogs strewn around our living space. I wonder how much longer that will continue, given the easy availability of seeds (and pretty pictures) on the interweb. I would have predicted that, in the interest of saving trees and fuel, the paper catalogs would have already become history. We're still enjoying the pretty

I'm a mostly self-educated putterer/maker/doer who has a hard time stopping his brain from thinking, his body from moving, and his hands from twisting and fixing bits of this and that into semi-useable gewgaws. Sometimes I get actual ideas, and sometimes I even make actual, useful things.

The Ides of Spring

pictures that come to our mailbox, though, and Jennifer uses pretty pages from the catalogs to make appropriately illustrated envelopes for seeds we've saved from each year's garden. Sort of an organic origami practice, you might say. I'm going to reserve my opinion regarding the continued availability of seed envelope stock, but perhaps I'll take up drawing fruits and vegetables just in case. It's nice to have all that nascent life and sustenance wrapped up in pretty packages. It feels hopeful to me.

It also feels hopeful to keep looking for patterns in my day-to-day, month-to-month, and even year-to-year observations. I peruse the several years of my phenology chronicles pretty regularly to see how the months of one year might relate to the same months in other years. As a gardener, an orchardist, a maple sap gatherer, and a generally (hopefully) attendant/observer/witness to the continuing clockwork of Life, it feels like it makes sense and pays dividends to find

patterns. A person can guess away in full futility without being observant of connections and coincidences happening before our very eyes, it seems to me. Beyond the rather glaring and obvious pursuit of conspiracy theory (I'm going to call it "conspiracy hypothesis", for the most part, as so many of these hypothesisists don't seem to reckon with the difference between correlation and causation), I think some really useful information can be gleaned by using data that we've gathered close to home in conjunction with the data sourced from who-knows-where across a web that mostly vibrates to the tunes of power-brokers and influencers in every quarter. There's less sifting required when it comes to what's actually transpiring before my eyes, I'd say.

So I'll labor under the assumption that the famous groundhog's expostulations need to be taken with a grain of salt. I'll trust the arrival of the migrating birds over the blowy gusts coming from the mouths of the rich and power-hungry. I'll look to the Earth



The thaw, to freeze continues on, for now at least.
Photo by Sam Dodge

and Sky, as they dance before the eyes of my lifetime, for the patterns that serve my ground-level interests. I'll pay attention where attention seems to me to be due. If the weather throws a tantrum, I'm much more likely to pay attention than to a tantrum thrown by some fancy-pants New York billionaire. Or a famous Philadelphia woodchuck with a bunch of cameras in its bewildered face.

I'll gather my seeds, share them with the people they mean something to, and get on with the tasks (not the business, that's for the billionaires to give you) of life among Beings that share a tender little planet in the best, most honest and conscientious way that they are able. I'll keep watching the sun rise and set, invariably, every single day.

I invite you to join me.

...**"Native"** cont'd. from pg. 6

There are also villages and campsites noted in both cities. Further south, Brown noted mound groups near Downsville and Dunnville, south of Menomonie. But interestingly, he listed no mounds in Menomonie itself, even though Russel and Lynch in their history of Menomonie reported that 20 mounds existed, though 17 were completely lost when Lake Menomin's dam was raised in 1957, flooding all but three of the mounds.

Materials in Brown's field note files were fascinating. One letter in the Dunn County file was an actual letter from John Holly Knapp, one of the four principal owners of the Knapp Stout Lumber Company. Knapp was writing to Professor Butler at the University of Wisconsin in Madison about a mishap in Chetek, where the lumber company was building a new dam. He wrote how workmen at the dam site, in need of fill

for the dam, turned to the nearby mounds and took the material to dump it into the dam construction, including skeletons. In 1876, Knapp wrote:

"Though the new village of "Chetek" in Barron County, Wis. cannot boast, like Rome, of seven hills which dame nature made (excepting the debris caused by man's ambitions and insatiable thirst for destroying and rebuilding), yet it can boast of several mounds evidently built by man—barbarous though he may have been—long before the milk of the wolf was found to be sufficient nourishment for the incipient founder of Rome.

..." their curiosity being satisfied, they, vandal-like, dumped them (the skeletons) into the dam!!

"What a pity such a treat for an archaeologist, such a novelty for the great Centennial Exposition, so great a treasure for our State Historical Society should have been lost by this dam

business." Your friend, John H. Knapp
Other documents in the file noted similar desecrations of other mounds in the area. Brown's early estimate was that Wisconsin was home to 12,000 mounds—later archaeological estimates put that more likely as high as 20,000. Brown noted that farmers, real estate speculators, and relic hunters had destroyed one-third of the mounds by the time of his research.

My time at the Archives with Brown's maps and field notes showed Brown had noted no Native presence on my land southwest of Prairie Farm, and no other Native sites show in Prairie Farm or Ridgeland, except a Native trail Northwards. I know Native people lived and traversed the area from other historical records. It's possible there are still sites to be found. The Wisconsin Historical Society would be the place to turn if you believe you know of such sites.

Rausch-Lundeen

Funeral Homes, Inc.
 331 Dallas Street W. PO Box 185 Dallas, WI 54733 715-837-1580
 400 North 1st. Street PO Box 121 Cameron, WI 54822 715-458-2514
 www.rauschlundeen.com

Rural Mutual
 Insurance Company
Agent Tyler Holten
 tholten@ruralins.com
 108 E Main Street, Ridgeland, WI 54763
CALL FOR A QUOTE
 Cell: 715-418-1634 • Office 715-949-2122

West Akers Lutheran Church
 The Church on the Hill • Pastor Mark Woeltge
Good Friday Worship - April 3rd at 7 pm
Easter Sunday - April 5th at 8:30 am
E1795 1440th Ave., Prairie Farm

School District of Prairie Farm

April 2026

Corey Berghammer, Superintendent • John Casey Fossum, Principal

715-455-1861

www.prairiefarm.k12.wi.us



Principal's Report

While Mother Nature sent us back to winter, spring events are heating up here in the district. We will reach the end of the third quarter on Friday, March 27th with report cards coming out the following week. The fourth quarter will begin on Monday, March 30th and is sure to fly by as the fourth quarter is always packed full of events.

Each month teachers at each level select students who have shown improvement or gone above and beyond in some area of academics or extra-curricular activity. This month the high school has selected Jon Wendt and Briana Klefstad as their recipients. Staff wrote, "Jon has taken every advanced science course that Prairie Farm High School offers. He does an excellent job in making sure that he grasps concepts and is very observant when doing all sorts of labs. His lab work exhibits excellent critical thinking skills and his lab analytics allow him to enhance the knowledge of everyone around him. Jon will transition well to the university level." "Briana Klefstad has done a fantastic job all year by taking a heavy class load as a junior. She has taken multiple advanced science courses, multiple social studies classes, and worked in the elementary through the peer-to-peer program. She does an excellent job in being a self-starter when helping at the elementary and also is one of those students who tackles difficult concepts with persistence. Her work ethic will translate well to whatever she decides to do after high school."

The middle school has selected Anton Olson and Ellis White as their Panthers of the Month. Staff wrote, "Congratulations to Anton Olson on being chosen for Panther of the Month! Anton consistently turns in quality, on-time work. He stays engaged in classroom lectures and group work and teachers can always count on him to participate in class discussions. His quiet leadership skills in the classroom are appreciated. Keep it up, Anton!" "Ellis is a great student! He's very respectful and a pleasure to have in class. He has a positive attitude and always gets his work done. He's also creative and has a unique sense of humor. Ellis knows how to have fun without ever being a behavior problem. His quiet confidence, hard work, and good nature are a perfect example for other students."

The elementary nominates one student from each class to be recognized at our monthly Panthers of the Month celebration. This month the following students were recognized for their great efforts. Congratulations to Aurora Wendt, Jadin Henneman, Owen Howe, Dawson Anderson, Ella Davis, Axel Rosar, Graysen Selkow, Calvin Cadman, and Benton Nelson.

The spring session of parent teacher conferences was held on March 12th. This was a great opportunity for teachers to not only talk about ways kids can improve, but also brag about the fantastic accomplishments and achievements students are making within the classroom. Thanks to all who were able to attend.

Read Across America was celebrated on March 11th in collaboration with the Elementary's Special Friend Day. This is a great activity in partnering our elementary students with a variety of family and friends to celebrate the importance of reading. The Book fair was once again a success; funds will be used to provide additional books to our classrooms. Thanks to all who purchased books.

If you have any questions or concerns, please feel free to stop by the district office, or contact me at fossum@prairiefarm.k12.wi.us or 715-455-1861.

Sincerely,
Casey Fossum
PreK-12 Principal
School District of Prairie Farm
715-455-1861 ext. 258

Emergency Closing Information

The District will utilize our automated calling system to alert families of school cancellations and delays. If you are not receiving the automated calls, emails, or text messages, please contact the school office. We will be also notifying the radio and television outlets.

For the most up to date sporting events, please visit www.prairiefarm.k12.wi.us

*Paid for by the Prairie Farm School District.
It is the policy of the School District of Prairie Farm that no person may be discriminated against in any program or activity as required by s.116.13 Wis. Stats.*

From the Superintendent

Spring seems to have arrived, even though winter held on for a few snow falls in March. Hopefully, the sun and warmth are on the way to provide all of us with wonderful spring weather.

The administration office is busy planning next year's budget, finalizing summer school plans, and preparing for the facility and technology updates. Some facility updates we are looking at are upgrades to high school classrooms, possible blacktop sealcoating, flooring repairs, painting, and concrete repairs. We are always looking for the best solutions to keep our building and grounds up to date and looking great.

The PFC community education program is busy getting ready for the summer baseball and softball seasons. Practice fields are available in Prairie Farm, Clayton, Reeve, and Arland. We are excited about the support from our local communities in allowing these teams to use their facilities. At this time home games will be held in either Prairie Farm or Clayton. We are expecting ten teams between both communities from grades 3 to 8 for softball and baseball.

Speaking of baseball and softball, a special thank you to the family of Randy Roemhild! The family has donated a new fence for the youth field here at Prairie Farm, in honor of their father Randy Roemhild. The donation of this fence was over \$2,400.00. This great donation is very much appreciated by the PFC community education Program, as well as the Prairie Farm and Clayton School Districts. The funds that are raised each year at the annual Randy Roemhild ball tournament are donated back to support our youth baseball and softball programs.

I want to take the opportunity to thank our staff for everything that they do to make the Prairie Farm School District and Cub Care a great place for student growth. Each member of our staff contributes one way or another to the success of our students.

As always, please feel free to reach out with any questions or concerns.

Corey Berghammer
cberghammer@prairiefarm.k12.wi.us
Superintendent
715-455-4219

Registration Night

2026-2027 Pre-Kindergarten

Tuesday, April 28th, 2026 from 4-8 p.m.

Contact Melissa Nagel with questions,
nagel@prairiefarm.k12.wi.us, 715-455-1861

Summer School

June 8-25, 2026

Students entering PreK-8th grade are welcome to attend.

Breakfast: 7:45-8:30 a.m.

Class: 8:30-12:00 p.m.

Lunch: 11:45-12:30 p.m.

Free meals will be served to anyone 18 and under in the commons.

Questions can be directed to Michelle Buckley in the elementary office. 715-455-1861

SCHOOL DISTRICT OF PRAIRIE FARM
BOARD OF EDUCATION REGULAR MEETING
March 16, 2026—6:00 p.m.—IMC
MINUTES UNAPPROVED

Board Members Present: Nelson, Cadman, Miller, Richards, Roemhild, Bates
Board Members Absent: Hansen

A) Call to order (subject to Section 19.83 Wisconsin Statutes) by President Roemhild at 6:03 p.m.

Mission Statement: The Prairie Farm School District in partnership with family and community provides educational experiences which foster academic excellence, lifelong learning and citizenship.

B) Pledge of Allegiance
C) Adopt Agenda

Motion by Cadman to adopt the agenda as presented, seconded by Nelson. Motion Carried.

D) Minutes of February 16th, 2026 Regular Board Meeting

Motion by Nelson to approve the minutes of the February 16th, 2026 Regular Board Meeting, seconded by Bates. Motion carried.

E) Reports

- 1) Principal's good news report-Mr. Fossum
- 2) Student board members
Spencer Roemhild and Sophie Bergmann
- 3) Athletic director's report-Alethea Seeger

F) Business

- 1) Public comment residents/parents
- 2) Policies-first reading
 - a) 2131.01-Reading Instructional Goals and Kindergarten Assessment
 - b) 8431-Preparedness for Toxic Hazards
 Policies-technical corrections
 - c) 0141-Number
 - d) 0142.2-Qualifications
 - e) 0145-Board Member Anti-Harassment
 - f) 5111.01-Homeless Students
 - g) 5330-Administration of Medication/Emergency Care
- 3) Early College Credit Program (UW/private college), Start College Now Program (WI technical college and High School Academy request (Bloomer Welding Academy)
Motion by Nelson to approve the Early College Credit Program, Start College Now Program and the Academy request as presented, seconded by Richards. Motion carried.
- 4) CESA 11 Service Contract for 2026-2027 school year
Motion by Bates to approve the CESA 11 Service Contract for 2026-2027 school year, seconded by Nelson. Motion carried.
- 5) 66.0301 agreement to NorthStar Academy Charter School Program for the 2026-2027 school year
Motion by Nelson to approve the 66.0301 agreement to NorthStar Academy Charter School Program for the 2026-2027 school year, seconded by Bates. Motion carried.
- 6) Board of canvassers, two board members for Wednesday, April 8, 2026
Chuck Richards and Matt Cadman, April 8th, 4 p.m.
- 7) Payroll check deposit in the amount of \$221,862.59
Motion by Bates to approve the payroll check deposit as presented, seconded by Nelson. Motion carried. Roemhild abstained.
- 8) Financial report: AP in the amount of \$76,870.12, direct withdrawals in the amount of \$49,405.62 and PCard withdrawals in the amount of \$15,403.25
Motion by Cadman to approve the financial report as presented, seconded by Miller. Motion carried.
- 9) Committee and other reports, information or comments
 - a) Update on PFC coop
 - b) Facility update
 - c) Joint PAC/Board Member meeting, April 1, 2026 at 6:00 p.m. Chuck Richards, Bonnie Roemhild and Corey Berghammer have registered.
 - d) Schedule business operations committee meeting week of April 6, 2026. Meeting changed to April 8th at 4:30 p.m.
 - e) Other
Mr. Berghammer reported that Mandela Barnes will be visiting the district on Thursday, March 19th at 2:00 p.m. A discussion was had on options for a boys and girls hockey coop.

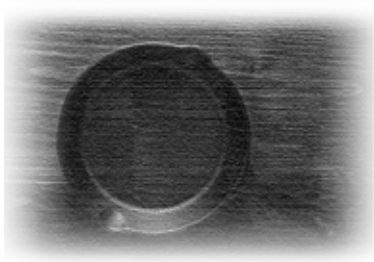
- 10) Future meetings, Monday, April 20, 2026, Regular Board Meeting at 6:00 p.m.
- 11) Motion and roll call to go into closed session pursuant to Section 19.85 (1) (c) of the Wisconsin Statutes, to consider the employment, promotion, compensation or performance evaluation data of support staff, supervisors and teaching staff employees under which the Board has jurisdiction. Motion to go into closed session by Miller at 7:06 p.m., seconded by Richards. Motion carried.
Roll call: Nelson yes, Cadman yes, Bates yes, Richards yes, Miller yes, Roemhild yes
- 12) Roll call and return to open session
Motion to return to open session by Nelson, seconded by Cadman. Motion carried.
Roll call: Miller yes, Bates yes, Richards yes, Cadman yes, Nelson yes, Roemhild yes
- 13) Resignations
 - a) Emma Regalado, Middle School Track Coach, effective March 1, 2026
 - b) Emma Regalado, Title I Paraprofessional, effective March 10, 2026
 - c) Tom Schaffer, Middle School Football Coach, effective February 12, 2026
 - d) Don Larsen, Paraprofessional, effective April 17, 2026
 - e) Candi Hartung, Food Service, effective February 17, 2026
 Motion by Nelson to approve the resignations as presented, seconded by Miller. Motion carried.
- 14) Contracts
 - a) Don Larsen, Building and Grounds Supervisor, effective April 20, 2026
 - b) Hannah Polk, Assistant High School Volleyball Coach, 2026-2027 school year
 - c) Josh Miller, High School Baseball Coach, 2025-2026 school year
 - d) Alyssa Cassellius, Middle School Volleyball Coach, 2026-2027 school year
 Motion by Richards to approve the contracts as presented, seconded by Bates. Motion carried. Miller abstained.
- 15) Possible action from items in closed session
No action taken.
- G) Adjournment
Motion by Richards to adjourn at 7:54 p.m., seconded by Cadman. Motion carried.

What's the best way to capture a leprechaun?!

Sixth grade scientists had lots of creative ideas! They used the engineer design process, teamwork, and household objects to build traps. They could have worked on this for hours!!



Throwback



IRON SKILLET

By DM MICK

If you are looking for a new casserole to try, tamale pie is a hearty option. Made with fresh vegetables, bold spices, and ground beef, the dish is topped with a layer of wholesome cornbread for a satisfying finish. Simple yet full of flavor, tamale pie is a great choice for busy spring days. It is also an easy way to use extra ground meat in storage or to try something new at the dinner table.

The dish comes together in one pan, making it easy to prepare and clean up. Ingredients can be adjusted to fit what you have on hand, including different vegetables or spice levels. It can also be made ahead of time and reheated, making it a reliable option for families on the

Cast iron adds a rustic touch to meals and is always an excellent choice for home-crafted meals. Do you have a favorite cast-iron skillet recipe? Send us an email with your recipe and any family story you'd like to share! We'd love to feature your story with our readers. Email us at editor.hayriverreview@gmail.com.

Tamale Pie

go. Whether served for a weeknight meal or shared at a gathering, tamale pie offers comfort, flavor, and convenience in every bite.

Ingredients:

- 1 yellow onion, chopped
- 1 ½ lb. ground beef
- 2 Tbsp. olive oil
- 1 red bell pepper, chopped
- 2 cloves of garlic, chopped
- 1 4 oz. can diced mild hatch chiles
- 1 15 oz. can of red enchilada sauce
- 1 ½ cups corn
- 4 tsp. Chili powder
- Salt and ground pepper to taste
- 6 oz. cheddar, grated
- 1 package of cornbread mix (milk & egg as directed)

Directions:

Preheat your oven to 375 degrees. While the oven is heating, heat oil in a 12-inch cast-iron pan over medium heat. Add your onion, bell pepper, and garlic. Cook, stirring periodically until veggies are soft, roughly five minutes.

Add the ground beef and cook while stirring periodically, until browned. Once the meat is browned, add ½ cup of corn, 2 tsp of chili powder, enchilada sauce, and one cup of shredded cheddar. Lightly mix in and remove from the heat.

Make the cornbread according to the directions on the packaging. Add hatch chiles, remaining ½ cup of cheddar, 2 tsp of chili powder, and one cup of corn to the mixture. Spread the mixture over the ground meat and veggies. Bake at 375 degrees for 30 minutes, or cornbread is cooked through.



A quick, wholesome meal for the on-the-go family. Photo submitted by DM MICK

Mary Poppins

This past weekend, the Boyceville Drama Department hosted the musical, Mary Poppins. Over 30 middle and high school students performed many songs and dance routines. Shown Lt to Rt: Alexis Cole (statue), Johanna Antinucci (Mary Poppins), and Kai Mella-Lalane (Bert).

The opening night drew a crowd of nearly 500 people to watch the show. Shown Lt to Rt: Brady Rasmussen (George Banks), Lorale Swenby (Winifred Banks), Bella Clark (Jane Banks), Lucas Lain (Michael Banks) and Eli Cole (servant). Photos submitted by Steve Duerst



Spirit Pump



The Prairie Farm School District and Synergy have teamed up to provide one more avenue for community support. Now in operation in Prairie Farm is the Prairie Farm School Spirit Pump. When you choose to fill up your tank here, two cents of every gallon is gifted to the Prairie Farm School District. This is one more great way to support our local school!

Pioneer, Riverview Manor, Scott Terrace Apartments Prairie Farm

1 and 2 Bedroom Apartments Available

For seniors 62+ or handicapped/disabled
Federally subsidized rent based on 30% of
adjusted gross income, income limits apply.

LOCATED NEAR DOWNTOWN
within walking distance of grocery store, post office,
clinic, bank, beauty shop, bar serving food and church.

Managed by Barron County Housing Authority

For availability and more information

Call 715-537-5344, email

hpm@barroncountyha.com

barroncountyha.com



This institution is an equal opportunity provider and employer





Martha Wright lives in the Hay River area where she spends as much time in the woods as possible. She enjoys long nature walks, looking for new plants to identify, and foraging for wild edibles. Her favorite wild edible is red clover blossoms made into fritters.

Winter Vacation in Door County

FIELD & WOODLAND WANDERINGS

By Martha Wright

Which Wisconsin county is home to five state parks, 21 county parks, 29 state natural areas, 14 nature preserves, two state wildlife areas, and one national wildlife refuge? If you guessed Door County, you are correct. Door County is a big tourist destination known for its cherry blossoms and small harbor towns on Lake Michigan, but there is a vast array of nature to see there as well.

Door County's Cave Point County Park boasts spectacular ice formations in the winter caused by the waves and spray off of Lake Michigan. I have seen photos of the beauty, and that is what has enticed me to make my initial visit to Door County in the winter. The weather has

been warm for several days so the ice is not as amazing as the pictures I have seen, but it is still a beautiful spot to get my first view of Lake Michigan.

Whitefish Dunes State Park surrounds Cave Point County Park, so after wandering along the cliffs for a while, I head over to the nature center at the state park. I learn that the dunes which give the park its name occur in rows, with each row getting taller as they get farther from the shoreline until the furthest ones are as much as 90 feet high. They are covered with vegetation, so one does not immediately realize that they are sand dunes; they are a unique and fragile ecosystem, especially susceptible to erosion, which means climbing on them is not allowed.

It is a new experience for me to walk along a sandy beach while it is separated from the water by a stretch of ice and snow. The temperature is

warmer on the beach than it was under the trees at Cave Point, and it is shaping up to be a warm, sunny day, but I still eat my lunch inside the car in the parking lot where I am out of the wind. After that, I follow the road straight through the state park to get back on the highway.

My next destination is Bailey's Harbor, one of the few towns on the southeast side of Door County. It is surrounded by thousands of acres of state natural areas, and I find the nature center for The Ridges State Natural Area right in the middle of town. I pay the small fee so I can hike the trails between the ridges that were left as the lake receded over the years. This area is known for a diversity of plant life, especially rare and endangered species that are not found elsewhere. Of course, it is not the time of year for wildflowers, so I am hoping to return in other seasons when they are blooming.

From Bailey's Harbor, I cross the county to Egg Harbor on the northwest side. The 9-mile drive takes me past multiple orchards of winter-dormant cherry trees, and I begin to get a first-hand view of why this is called "Cherryland, USA." According to my National Geographic map of Door County, there are over 2,000 acres of cherry trees, along with apples, pears, and grapes, growing here. These orchards produce



Lake Michigan at Cave Point County Park.



The beach at Whitefish Dunes State Park.



The legendary curvy stretch of Highway 42. Photos submitted by Martha Wright

more than 8 million pounds of cherries each year.

I follow Highway 42 up the coast, taking in all the quaint harbor towns as I drive through. I drive far enough to experience the legendary curvy stretch of road on the northern tip of the county before heading back toward Newport State Park to participate in a luminary hike. Newport State Park is one of 270 International Dark Sky Places around the world, recognized for exceptional star viewing, but this evening is foggy, so no stars are visible.

Instead, I join the other attendees to hike through the snow under the trees by the light of candles in cups set along the trail. I notice, as the trail comes out onto the beach, that the wind picks up and the candles here are battery-operated to prevent them from being blown out

by the stiff breeze off the lake. Because of the fog, I can only see a few feet in front of me. It is like hiking through a candlelit tunnel. The breeze is cold, so I stop at a campfire on the shore to warm up before returning to my car.

The luminary hike was the final event in my plan for Door County activities, but what is a vacation without bringing home some souvenirs? Between Fish Creek and Egg Harbor, I find an orchard market that sells all things cherry, where I buy cherry juice, cherry jam, cherry syrup, cherry applesauce, cheese with cherries, chocolate-covered cherries, dried cherries, and cherry barbecue sauce. I will be returning home with a taste of "Cherryland USA" to remind me of my nature vacation in a unique and memorable part of our state.

**Opening Friday
April 24th 2026 10AM**

We have over 700 hanging baskets, thousands of annuals, perennials, rustic planters, yard décor, and a full showroom. Vegetable plants, vegetable seed, trees, shrubs and so much more!

This year, we will be giving away a free gift for the first 100 moms for Mother's Day, May 3rd through May 10th with any purchase!

We will be open 10-6 Tuesday-Sunday. We are closed on Mondays. Call for questions or, to let us know what custom items you'd like planted.

**THE COUNTRY
PETALER
GREENHOUSE**



**1131 11 11-3/4 St.
Barron 715-357-3276**

NOW HIRING

Join the Monroe Manor Community Team

\$500 Sign-On
Bonus



SCAN TO
APPLY:



OR CALL:
715-537-5700

Looking for a job with purpose?

At Monroe Manor, your work makes a real difference every day

- ✓
Competitive Pay
- ✓
Shift Differentials
- ✓
Insurance & PTO
- ✓
Supportive Team Environment

Boyceville High School 3rd Place at Science Olympiad West Regional

By Andy Hamm

The Boyceville High School Science Olympiad team competed at the regional tournament at Menomonie High School on March 7th and finished as the third-place team at the challenging regional tournament.

Boyceville earned five regional championships and eight regional runner-ups. Boyceville High School medal winners were as follows:

Gold Medals

- Boomilever - seniors Zoey Hellendrung & Chelsi Holden
- Electric Vehicle and Helicopters - seniors William Engel & Jon Madison
- Hovercraft - Engel and Holden
- Robot Tour - juniors Kade Phillips & Brady Rasmussen

Silver Medals

- Anatomy & Physiology - senior Johanna Antinucci & junior Eleanor Farrell
- Bungee Drop - Hellendrung & Engel
- Experimental Design - Senior Karen Schaff, Hellendrung, & Holden
- Horticulture - juniors Ava Dormanen & Emily Jackson
- Ping Pong Parachute - Engel & Holden
- Protein Modeling - Karen Schaff and freshman Sara Hafermann
- Hovercraft - sophomores Arnold Sudbrink & Tim Jackson (JV)
- Boomilever - juniors Sawyer Garbe & Brooke Fenton (JV)

Bronze Medals

- Astronomy - Rasmussen & Farrell
- Circuit Lab - Rasmussen & Phillips
- Codebusters - Karen Schaff, Rasmussen, & Phillips
- Designer Genes - Karen Schaff & Hafermann
- Machines - Hellendrung & Schaff
- Boomilever - sophomores Isabelle Feeney & Walter Schaff (JV)

Fourth-place Medals

- Code Craze and Engineering CAD - Rasmussen & Phillips
- Experimental Design - Feeney, Walter Schaff, and sophomore Eli Weber (JV)
- Robot Tour - Sudbrink & Tim Jackson (JV)
- Ping Pong Parachute - Fenton & Garbe (JV)

"I am really impressed with our well our students did at a very challenging regional tournament," said Boyceville head coach Andy Hamm. "Our students have been working really hard, and our JV kids knew they had to earn several medals to earn a spot in the state tournament, and they came through with six medals, which should be plenty to qualify for the state tournament. We look forward to preparing for the state tournament next month at Medford High School."



Boyceville team continues to take challenges head-on. Photo submitted by Andy Hamm

Boyceville High School's varsity team has likely qualified for the state tournament, though official state qualifying teams will be announced later this week. The JV team will also learn its fate for the state tournament soon. The final invitational competition before the state tournament will be at Medford High School on March 28th for the middle and high school teams. The state tournament is Saturday, April 18th, at Medford High School. Boyceville Science Olympiad is coached by Andy Hamm, Russ Riehbrandt, and Tony Pelikan.

Corey's Repair, LLC

Auto / Truck Repair & Towing

216 Main Street East, Ridgeland

COREY MICKELSON, OWNER

715-949-1644 715-949-1099

TACKLE THOSE IMPROVEMENT PROJECTS

With a Home Equity Line of Credit

The simple, flexible & convenient way to finance home improvements you've put off all summer.

Learn more or apply online at DairyStateBank.com!

PRAIRIE FARM
715-455-1339
100 HEPBURN ST E
www.dairystatebank.com

Member FDIC

RICE LAKE | MENOMONIE | BIRCHWOOD | BLOOMER | COLFAX
CUMBERLAND | DOWNSVILLE | HAUGEN | TURTLE LAKE | WHEELER

ctcseeds.com

Orders over \$75 include FREE shipping!

Certified Organic and Open-Pollinated Seed

RASSBACH REALTY LLC

www.rassbachrealty.com

Erik Davidson
Cell: 715-505-7469

Jill Rassbach Pember
Cell: 715-556-1539

Buy or Sell with us today!

WANTED

HayRiver

REVIEW

BOARD MEMBERS

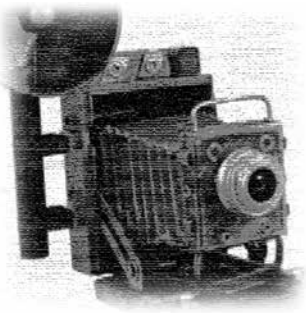
keep the Hay River Review
 a dynamic monthly newspaper
 serving our readers, businesses
 and other institutions in
 the greater Prairie Farm,
 Ridgeland and Dallas area

BOARD MEETINGS

ARE USUALLY ABOUT AN HOUR EVERY OTHER MONTH, CONDUCTED BY ZOOM. TERMS ARE FOR THREE YEARS, WITH RENEWAL A POSSIBILITY.

If interested, please submit a note of interest to board secretary Betty Glaser

BLS5524@YAHOO.COM



PHOTOS FROM OUR PAST

By Lon Christopherson

In the late 1800s and early 1900s, in our local communities, there existed many fraternal organizations. Prairie Farm, Ridgeland, Dallas, and Sand Creek all had their local chapters. These associations were more than just social clubs— they provided essential services that the government did not offer at the time, such as Mutual Aid and Insurance. Members paid dues into a collective fund. In return, the association provided life insurance and sick and

death benefits to workers and their families—critical protection in dangerous industries like logging and farming. In Ridgeland, The Independent Scandinavian Workingmen’s Association was one such organization. The main branch was established in Eau Claire in 1893 and incorporated as the Independent Scandinavian Workingmen’s Association. It grew rapidly, establishing lodges throughout Wisconsin, and eventually across Minnesota, North Dakota, and Illinois. The lodges provided a space for immigrants from Norway, Sweden, and Denmark to socialize together, helping to forge a broader “Scandinavian-American” identity rather than sticking solely to their specific national backgrounds.

In nearby Dallas, the Independent Order of Odd Fellows (IOOF) Lodge #278 was established. They were

If you have an interesting photo from our community's past that you'd you like to share, email it to me at lonchristopherson1@gmail.com or stop by the Ridgeland Library Thursdays, 3-5.

Early Fraternal Organizations



The Rebekahs of Dallas, Wisconsin. Photo courtesy of June Marie



Independent Scandinavian Workingmen’s Association Picnic in Ridgeland, Wisconsin. Photo courtesy of Don Link



The Modern Woodmen of America, Prairie Farm Camp No. 2422, pose in front of their lodge. Photo submitted by Lon Christopherson

called “Odd Fellows” because, at the time of their founding, it was considered “odd” for citizens to organize for the purpose of helping the poor and burying the dead without a state or church mandate. A female branch of the IOOF was also established in Dallas, the Rebekahs of Lodge # 159. The Rebekahs, who were named after the Biblical Rebekah, focused on three core principles: Friendship, Love, and Truth, emphasizing kindness to strangers. Both Prairie Farm and Sand Creek had chapters of the Woodmen of the World (WOW) and the Modern Woodmen of America (MWA). In Prairie Farm, both had a presence,

but the Modern Woodmen were historically the most prominent in that specific village. The local chapter in Prairie Farm was typically referred to as a “Camp” (the official term for a local lodge). In Prairie Farm, it was Camp No. 2422. The Woodmen provided fraternal insurance. Since Prairie Farm was a logging and farming town, the risk of injury was high, and the Woodmen provided a safety net for families if a breadwinner was lost. If a member’s barn burned down or they were too sick to harvest their crops, the men of Camp 2422 would organize

a “work bee” to do the labor for them. This was the original “social security” for the farmers of the area. The camp also had a drill team known as the “Foresters.” They wore semi-military uniforms and carried ceremonial axes. The Foresters participated in regional “Log Rollings”— large social festivals where different camps competed in drill team performances and athletic events. Prairie Farm also had a womens group affiliated with the Woodmen called the Royal Neighbors of America. It was established in 1903 and was called Evergreen Camp 2002.

“Fraternal” cont’d. on page 15...

Northwoods
ELECTRIC LLC.

Master Electrician • Fully Insured
Residential • Commercial • New Construction • Remodeling

Mike Broten
Home: 715-455-1175 Cell: 715-296-9508

St. Paul's Lutheran Church

February Worship Time

Sunday Worship 8:00 A.M.
Sunday School 9:00 A.M.
Lent: Wednesdays at 7 p.m.
Feb 18- March 25
Service on Friday, April 3 at 7pm
Pastor Roger Quandt
fb.me/st.paulsridgeland 1-888-864-7161

Hay River REVIEW

The Hay River Review could use readers’ help to keep the paper coming to our community. Print journalism throughout the country is facing serious financial headwinds—declining advertising revenue and subscriptions because of online options for both. Many daily and weekly newspapers have reduced the size of their publications or simply gone out of business. The Review is facing the same challenges.

The board of the Hay River Publishing Cooperative created the Hay River Review Foundation, to offer our community a way to make a tax-deductible gift to support the continued publication of the Review. We are seeking corporate and foundation grants as well, but readers can also join in support of this important community resource, now in its 39th year of publication.

To make a gift, please mail your check to Hay River Review Foundation, N12638 County Road Q, Downing, WI 54734. Thank you for helping keep the Review a viable part of our Hay River Community!

Workshop Series to be Held in April “Save a Calf, Save a Cow”

By Deanna Wiersgalla

The University of Wisconsin Division of Extension is offering a Save A Calf, Save A Cow workshop series for dairy and beef producers, and dairy workers (in Spanish). This workshop provides information and techniques to boost your confidence in preparing the cow for calving, obstetric techniques, and newborn calf care. From transition cow diets and body condition to recognizing key signs of labor and handling difficult deliveries with precision, this program equips you with practical strategies to support both cow and calf health. Whether you're seasoned or new to livestock care, you'll gain hands-on expertise to approach calving with assurance, improve outcomes, and enhance the well-being of your herd.

Topics

- Getting newborns off to a good start: neonatal calf care and colostrum management
- Cow nutrition and management, pre- and post-calving, health, and reproductive success (breakout into either beef or dairy)
- Stages of labor and signs to watch for – when to call for help
- Calving equipment options and function/sanitation/cleaning
- Worker Safety and Biosecurity

The series costs \$20/person.

In-person Sessions

- Medford: April 7, 6 to 9 p.m.
- Chippewa Falls: April 8, 1-4 p.m.
- Chippewa Falls: April 8, 6-9 p.m.

Registration

Registration with payment must be received by March 31 (Dairy worker in Spanish deadline is March 17). Register online at <https://go.wisc.edu/calving> or call 715-748- 1413 for the Medford location, or call 715-232-1636 for the Chippewa Falls location. Don't wait to register; participation is limited to the first 20 paid participants per session. The University of Wisconsin-Madison Division of Extension provides equal opportunities in employment and programming in compliance with state and federal law. To request an interpreter, materials in an alternative language or format, or other services to make this workshop more accessible, contact Sandy at sandra.stuttgen@wisc.edu or 715-748-3327 ext. 1 by March 17.

Thank you to all of our subscribers. You help keep us going!

COMMUNITY BULLETIN BOARD

April 2	Dallas Library - Jokes, Pranks, Fun (April Fool's Day), 2 to 5 p.m.
April 2	Ridgeland Area Library Friends of the Library Board Meeting at Library, 6 p.m.
April 4	Dallas Library Closed
April 4	Ridgeland Civic Club Easter Egg Hunt, Village Park or Community Center, 10 a.m.
April 7	Dallas Library - Craft Activities, 2 to 5 p.m.
April 7	Prairie Farm Civic Club Meeting PF Community Center, 6 p.m.
April 9	Dallas Library - Craft Activities, 2 to 5 p.m.
April 9	Dallas Library Board Meeting- 6 p.m.
April 14	Dallas Library - Craft Activities, 2 to 5 p.m.
April 16	Dallas Library - Craft Activities, 2 to 5 p.m.
April 16	Ridgeland Civic Club Meeting, Ridgeland Area Library, 6 p.m.
April 18	History of Barn Quils by Jim Leuenberger- Ridgeland Dallas Elementary School, 10:30 -11:30 a.m.
April 19- 25	National Library Week
April 20	Willard L. Hinzman American Legion and Auxiliary Meeting- Ridgeland Community Center 6 p.m.
April 21	Dallas Library - Craft Activities, 2 to 5 p.m.
April 23	Dallas Library - Craft Activities, 2 to 5 p.m.
April 25	Ridgeland Area Library hosts Barn Quilt Painting Class - Ridgeland Dallas Elementary 8 a.m. to 5 p.m.
April 28	Dallas Library - Craft Activities, 9 a.m. to Noon
April 28	Ridgeland Area Library Cookbook Club- Bring a dish to pass, Ridgeland Community Center, 6 p.m.
April 30	Dallas Library- Craft Activities, 2 to 5 p.m.
April 30	Ridgeland Historical Meeting Ridgeland Area Library- 5:30 p.m.

Put your event on the Community Bulletin Board by contacting Betty Glaser at bls5524@yahoo.com or (715)529-1451.

**SPONSORED BY NEDLAND INDUSTRIES
RIDGELAND, WI**

TOWNSHIP & VILLAGE MEETINGS

Contact Town Clerks for details

Township/Village	Clerk/contact info.
Town of Arland	Pam Fall 715-455-1074 pamela.fall@thrivent.com
Town of Dallas	Karolyn Bartlett 715-837-1039 townshipofdallas@yahoo.com
Town of New Haven	Katie Bovee 715-643-3703 clerk@townofnewhavenwi.com
Town of Prairie Farm	Vicki Buck 715-495-2798 buckdv@chibardun.net
Town of Sand Creek	Pam Meinen 715-205-3511 sctown@chibardun.net
Town of Sheridan	Joe Boesl 715-205-6193 clerkofsheridan@gmail.com
Town of Vance Creek	Kara Norberg 651-491-3067 clerk@tn.vancecreek.wi.gov
Town of Wilson	Denise Schlough 715-949-1938 ddtsschlough@mosaictelecom.net
Village of Dallas	Lynn Anderson 715-837-1186 vdallas@chibardun.net
Village of Prairie Farm	Sherrie Siebert 715-455-1714 clerk@villageofprairiefarm.gov
Village of Ridgeland	Kristin Huset 715-949-2265 bkhuset@chibardun.net



SECURITY BANK

NEW AUBURN SAND CREEK
BLOOMER RIDGELAND

IRA Retirement Savings

Don't forget to stop in to make your IRA contribution.

April 15th deadline!

Security Bank Offices:

Ridgeland 715-949-2265

New Auburn 715-237-2658

Sand Creek 715-658-1415

Bloomer 715-568-3400




A FULL SERVICE BANK

Where Personal Service Comes First!

Lobby hours: **Mon. – Fri. 9 – 4**

Drive-up hours: **Mon. – Fri. 8 – 5; Sat. 9 – 12**

ATM Now Available: 24 Hours securityonlinebank.com



24/7
SELF-SERVE FEED

- FAMILY OWNED
- FULL FEED LINE
- SELF-SERVE BUYING
- BULK DELIVERIES
- CUSTOM FEED
- NUTRITION CONSULTING

715-651-9803
1571 E Division Ave Barron, WI, 54812



Well Drilling
Well & Water Systems Service
Free Estimates
715-458-2250

Jerome Wojkiewicz,
CWD, WDNR #561
Jeff Haughian,
CWD, WDNR #6562

—Serving the area for 40 years—

HAY RIVER LUTHERAN CHURCH
Worship - 8:00 a.m Fellowship After Service
Sunday School 9:15

Pastor Bruce Rimmereid
715-704-0166

Pastor Adam Klefstad
715-864-7387



All Welcome
officehayriverlutheran@gmail.com

Become a Direct Care Professional!

Learn about local options to become a Direct Care Professional by contacting the ADRC at 715-537-6225. Self-employment and free training information available



Aging and Disability Resource Center
of Barron and Rusk Counties

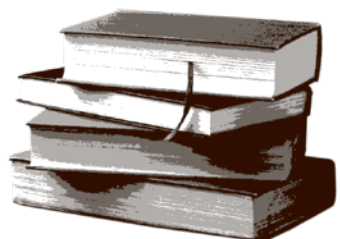


United Lutheran Church
Prairie Farm, WI

Sunday Worship 9:00am
Kids Church 1st Sunday of Month
"CLICK" Wednesday's at 6pm
Easter Services
Maundy Thursday: Meal 6pm, Service 7pm
Good Friday 7pm
Easter Sunday 7:30am, Breakfast following Worship

Virtual Worship Options
Phone-in: 534-444-4222
Facebook Live:
Facebook.com/ULCPrairieFarm
also uploaded after worship in finished

Pastor Sara Feld (715) 455-1454
www.ulcprairiefarm.com



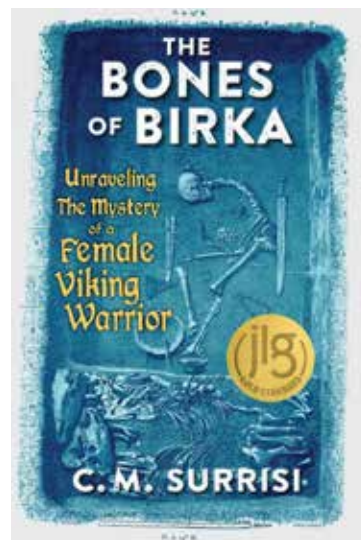
MICKELSON'S BOOK BINGE

By Donnette Mickelson

The grave of a Viking warrior was first unearthed by archeologist Hjalmar Stolpe in Birka, Sweden, in 1878. Birka, located on an island, was a major trading city from the 8th to the 10th centuries and played a key role in Viking commerce and culture. The grave contained high-status items of a great warrior, including battle armaments of a sword, axe, arrows, and the remains of two horses. Because of the traditional masculine artifacts, it was assumed that it belonged to a male warrior.

However, in the 1970's, Berit Vilkans noted that the bones had female characteristics. This observation was confirmed in 2017 when Charlotte Hedenstierna-Jonson conducted DNA testing on the bones that it was indeed a female, likely in her thirties.

This discovery challenged the long-standing assumptions of Viking culture, as well as other archaeological findings, and the presence of gender bias that is prevalent in the field of archaeology. This book, written for the YA (Young Adult) market, breaks down the field of archaeology into understandable areas of study in an engaging way. This book helps us interpret how discoveries like this can redefine our knowledge of history, and a must-read for all ages.



...**"Fraternal"** cont'd. from page 13

It is a fraternal life insurance organization that stresses faith, modesty, endurance, courage, and unselfishness for its members. Since most of these organizations paid a death benefit that helped with burial costs, many of our area cemeteries may have clues on the headstones as to some of those who were members. The Woodmen of the World often are seen with stone logs on their monuments. The Modern Woodmen of America monuments may have carved tree stumps or symbols like an axe, wedge, or mallet, sometimes crossed or grouped together. The Royal Neighbors of America tombstones may contain a shield with a camp number, a palm, or a broom. The Odd Fellows graves are sometimes marked with a three-linked chain with letters F, L, and T inside them, which stands for Friendship, Love, and Truth, or a palm of a hand with a heart in the center, representing charity and sincerity. The Rebekahs' stones may be marked by a beehive, a dove, an R, or a moon and seven stars. The Independent Scandinavian Workingmen's Association's gravestones may have a shield or circular crest with a handshake inside. Other symbols you may find could be a tool of labor, such as an axe, a sledgehammer, or an anvil. A member of any of these fraternities may also have a lodge or camp number inscribed on their stone as well. If you visit any of our local cemeteries, keep an eye out for these unusual tombstones, and if you can spot one, you have found the final resting place of a Fraternity member.

A. BERNAL ELECTRIC
Commercial • Residential
P.O. Box 71, Prairie Farm, WI 54762

Arturo Bernal
Master Electrician

(715) 418-1610



PIZZA
Fresh baked made to order
Call 715-263-3444

Take-n-Bake Pizza
Hot & Cold Sandwiches
Fountain Drinks
Fresh Bakery Gas

960 S Ave W, Clear Lake



TRINITY
GRADING & EXCAVATING

NO JOB TOO BIG OR SMALL

- Waterways
- Basements
- Commercial
- Residential
- Agricultural
- Roadways
- Grading
- Horse arenas

715-296-2852

Faith United Methodist Church
159 10th St., Prairie Farm

April 5 Holy Communion
April 9 United Women in Faith @ 4:00 p.m.
April 9 Administrative Council @ 5:30 p.m.



Pastor Vicky Strupp
Regular Sunday Worship 8:30 a.m.

HAPPY EASTER!!
Open Hearts, Open Minds, Open Doors



4-H GROWS HERE

My name is Ann Lee, and I have served as Dunn County's 4-H Assistant for nearly two years. With a long-standing passion for supporting youth through positive learning experiences, I've worked in community programs including the Dallas Children's Community Garden, local after-school and library programs, and church education.

Community Outings

By Ann Lee

For the past several months, we have been holding a food drive competition to see which of our clubs could collect the most. The 22'ers 4-H Club, the winners of the 2025-2026 Food Drive, collected 195 items, which averaged out to 7.5 items per member. As a reward, they will be given an ice cream sundae party. In total, all of the Dunn County 4-H members who participated in the Food Drive collected 737 items. These were donated to different food pantries around the county.

We could not be happier with the turnout that they had for the Battle of the Clubs. The Battle of the Clubs was a county-wide event on February 21, where each club forms teams of 5-10 youth



(Top) Dunn County 4-H members at the Battle of the Clubs on February 21st at the gym in the Alliance Church in Menomonie, Wisconsin.



(Middle) The Dunn County 4-H 2025-2026 Food Drive winners, who were the 22'ers 4-H Club, pictured here with the donations that they collected.



(Bottom) Zachary Rozmiarek, Abigail Dietsche, Lydia Dietsche, Dalila Wantoch, Benjamin Dietsche, and Ava Freeland at the Performing Arts Festival on March 7. Photos submitted by Ann Lee

to compete for awards in a variety of activities chosen by the Youth Activities Council. The winning club was the Missouri Valley.

On March 7, our Dunn County 4-H'ers participated in the Tri-County Performing Arts Festival at the Elk Mound High School, where they gave musical and dramatic performances for which they received medals and ribbons.

We have a new collaboration project in the works called with, Kathy Aspe, Alyssa Stelter and the staff at the Neighbors Nursing Home called "Generation Celebration" during which 4-H Youth Grades 3 and up learn about and celebrate the Neighbors residents by visiting with and interviewing them. Watch for more information about this meaningful project as it develops.

Featured Dunn County 4-H Group - Trout in the Classroom

Zachary Rozmiarek, the Dunn County 4-H Educator, is working with the Knapp Elementary School, the school's 5th-grade teacher, Courtney Budden, Trout Unlimited, and the DNR to provide a program called "Trout in the Classroom." This program provided an opportunity for students to care for trout eggs and

fingerlings in their own classroom.

Fourteen students participated in "Trout in the Classroom," where they were given 250 trout eggs from the DNR to care for as they hatched and became fry. Trout Unlimited provided the equipment for the project- a tank with a stand, a chiller, a filter, and an aerator. The students helped choose the trout lessons from which they learned about trout habitat, water quality, and ecology. They also conducted the water

quality tests themselves. With Zac's guidance, Trout in the Classroom was a positive experience for the students. According to him, one of the goals of Trout in the Classroom is to inspire the children to learn more about our environment by sparking an interest in fish and wildlife. "We hope to continue this partnership with the Knapp Elementary School, Trout Unlimited, and the DNR for

years to come," he said. If you live in Dunn County and don't want to miss out on future 4-H activities, join Dunn County 4-H today by calling Zachary Rozmiarek at 715-232-1636. To see more of our activities, visit our Facebook page.

Leaders aren't born. They're grown.

4-H - For You - For Me - For Fun - For Life

Barron Portable Buildings

Two locations- Barron and Sarona

Trevor- 715-205-6286
Vern- 715-418-6037



Quality buildings, from your local neighbors



Lazy L Trailer Sales

Becky Loomis
Krissy Loomis

W394 Hwy 10 Mondovi, WI
1-800-926-5309

Becky@LazyL.com
WWW.LazyL.com



Prairie Farm Physical Therapy & Rehab Specialists

NO REFERRAL REQUIRED! MOST INSURANCES ACCEPTED!

SPECIALIZING IN:
ORTHOPEDICS, POST OPERATIVE CARES, JOINT PAIN, BALANCE & STABILITY, SPORTS MEDICINE, INDUSTRIAL MEDICINE, VESTIBULAR REHAB, VERTIGO/ DIZZINESS, DRY NEEDLING




SPORTS MEDICINE PROVIDER OF THE PRAIRIE FARM SCHOOL DISTRICT

📍 224 S RIVER AVE, PRAIRIE FARM
📞 715-455-4103

